



How to Register for my|CalPERS



Not registered yet?

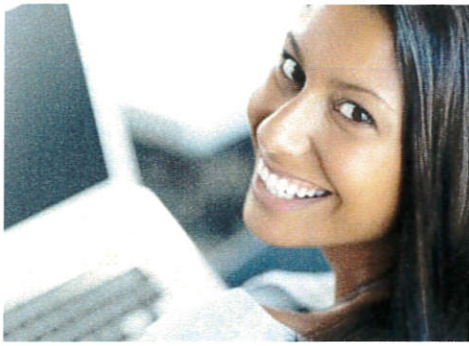
Go to my.calpers.ca.gov and follow these steps:

- 1 On the Pre-Log In page, select **Participant** and **Continue**.
- 2 Select **Register Now**.
- 3 Accept the terms and conditions under the Security Agreement.
- 4 Identify yourself by providing your name, date of birth, last four digits of your Social Security number or your CalPERS Identification number.
- 5 Answer a set of questions about your CalPERS account to verify your identity.
- 6 Create a Username and Password, and enter your email address.
- 7 Choose a personal security image and message.
- 8 Choose your security questions and answers. It's important to choose questions and answers you will remember.
- 9 Log in to my|CalPERS.

- 1 **Participant**
You are a participant if you are a member or non-member, community property payee, beneficiary, survivor, subscriber, dependent, conservator, or have power of attorney.
 ←
- 2 New to my|CalPERS? [Register Now](#). ←
- 3
- 4 **First Name (required)**

Don't include your middle name or initial
- 5 **Verify Your Identity (1 of 3)**
To verify your identity, choose the option that best answers the statement
- 6 **Password (required)**

At least 8 characters
No spaces, case sensitive
- 7 
- 8 **Question 1 (required)**
- 9 Welcome to my|CalPERS

Username



How to Access my|CalPERS

Can't remember your username?

- 1 Select **Forgot Your Username?**
- 2 Identify yourself by providing your name, date of birth, last four digits of your Social Security number or your CalPERS Identification number.
- 3 Select how you want to recover your username. You can choose to answer your security questions or have a temporary passcode sent to your email address or mobile number on record. Once you enter your temporary passcode, your username will appear.

Can't remember your password?

- 1 Select **Forgot Your Password?**
- 2 Identify yourself by providing your name, date of birth, last four digits of your Social Security number or your CalPERS Identification number.
- 3 Select how you want to reset your password. You can choose to reset your password by answering your security questions or by having a temporary passcode sent to your email address or mobile number on record. Once you enter the temporary passcode, you can create a new password.

If you exceed the allowed number of attempts to validate your identity, your account will be locked to protect your security. To unlock your account, contact us at 888 CalPERS (or 888-225-7377).

1 **Username (required)**
 [Forgot your Username?](#) ←

2 **Identify Yourself**
 Complete all of the fields below so we can confirm your identity. The information you enter must current Benefit Statement **exactly**.

First Name (required)

 Don't include your middle name or initial.

Last Name (required)

 Don't include a suffix such as Jr., Sr., I, II, etc.

3 **Recover Your Username**
 How would you like to recover your username? (required)

By Email
 Send a passcode to sxxxxxxxxxxx@calpers.ca.gov

By Phone
 Send a passcode to XXX-XXX-2390
 Text message fees may apply depending on your carrier.

1 **Password (required)**
 [Forgot Your Password?](#) ←

2 **Identify Yourself**
 Complete all of the fields below so we can confirm your identity. The information you enter must current Benefit Statement **exactly**.

First Name (required)

 Don't include your middle name or initial.

Last Name (required)

 Don't include a suffix such as Jr., Sr., I, II, etc.

3 **Reset Your Password**
 How would you like to reset your password? (required)

By Email
 Send a passcode to sxxxxxxxxxxx@calpers.ca.gov

By Phone
 Send a passcode to XXX-XXX-2390



How to Create a Retirement Estimate on my|CalPERS

Go to my.calpers.ca.gov and log into your my|CalPERS account, then follow these steps:

- 1 Select the Retirement tab, then select Retirement Estimate Calculator.
- 2 Select Start A New Estimate.
- 3 Enter your Retirement Date, Age, or select Earliest Retirement Date, then select Continue.
- 4 Enter your Monthly Final Compensation, then select Continue. **Note: If the Monthly Final Compensation is already entered, simply select Continue.**
- 5 Enter your Work Status, then select Continue.
- 6 Enter your Unused Sick Leave, then select Continue.
- 7 If you have an eligible Survivor, select Yes to include that Survivor in your estimate, then select Continue. If your employer does not offer Survivor Continuance, step 7 will not be asked. Simply select Continue after entering your Unused Sick Leave and move on to Step 8. **Note: A Survivor will be either your: spouse, registered domestic partner, minor children, unmarried disabled children, and economically-dependent parents.**
- 8 Enter the number of Lifetime Beneficiaries you want to include, then select Continue. **Note: If you do not want to include Beneficiaries in you estimate, select Calculate Your Estimate.**
- 9 Enter the Birthdate of your Beneficiary(ies), then select Calculate Estimate.
- 10 When your Estimate is complete, you can either Save or Recalculate Your Estimate.

The screenshot shows the Retirement Estimate Calculator interface with the following steps:

- 1 Home Retirement Health Education Resources Profile Message Center
Retirement Summary Benefit Summary Statements Retirement Estimate Calculator Apply For
- 2 Start a New Estimate
- 3 Earliest Estimated Retirement Date 05/26/2015
 Age
 Date
Continue Cancel
- 4 Monthly Final Compensation (\$) (required)
4563.95 x
Continue Back
- 5 Full-Time Employee
 Part-Time Employee
 Not employed by a CalPERS-covered employer
Continue Back
- 6 Hours of Sick Leave (required)
1672
Maximum 4900 hours
Continue Back
- 7 No
 Yes
Continue Back
- 8 None
 One
 Two or More
- 9 Primary Beneficiary's Birthday
We'll use your primary beneficiary's date of birth when calculating your standard benefit.
Enter Date of Birth (required)
mm/dd/yyyy
- 10 Save Estimate Scenario Recalculate Estimate