



# SAN BRUNO RECREATION & AQUATIC CENTER

Construction Advisory  
Committee Update

April 19, 2023





# AGENDA

1. Construction Update and Look Ahead Schedule
  - a) Project Information Update
  - b) Completed To Date
  - c) Schedule Update (Public Outreach)
  - d) What's Happening Next 30 Days and Beyond?
  - e) Other Related Projects Update
    - I. City Parkway and Crystal Spring Intersection
    - II. Beckner Shelter Road Projects
  - f) Change Order Report / Budget Update
  - g) Project Overview and Outlook
2. Questions

# Construction Update and Look Ahead Schedule



## PROJECT INFORMATION



**Start Date:** September 2021



**Project Completion:** (Late) Fall 2023



**Estimated Cost Completed To Date: 58.84%** (March 2023)



**EarthCam Link:** [https://share.earthcam.net/RecCenterBuild/rec\\_center\\_build/camera/view\\_1](https://share.earthcam.net/RecCenterBuild/rec_center_build/camera/view_1)



Multivista Aerial Photo on 03/03/23



Multivista Aerial Photo on 04/06/23

# Construction Update and Look Ahead Schedule

*COMPLETED TO DATE (Through 04/19/23)*



March 14, 2023



April 17, 2023



# Construction Update and Look Ahead Schedule

## *COMPLETED TO DATE (MARCH & APRIL)*



# Construction Update and Look Ahead Schedule

## *MARCH PROGRESS*



### BUILDING UPDATE



#### **NATATORIUM**

- INDOOR POOL DECK GRADE AND FORMS
- INDOOR POOL EXCAVATION (1st Week April)
- CONTINUE MECHANICAL AND PLUMBING
- 2<sup>ND</sup> FLOOR INTERIOR WALL FRAMING

#### **GYMNASIUM**

- INSTALL RUNNING TRACK GUARDRAIL
- CONTINUE 1<sup>ST</sup> FLOOR MEP
- CONTINUE 2<sup>ND</sup> FLOOR MEP
- CONTINUE EXTERIOR FRAMING

# Construction Update and Look Ahead Schedule

## *COMPLETED TO DATE (MARCH)*



### ONSITE UPDATE: GYMNASIUM – 2<sup>ND</sup> FLOOR – KITCHEN



FACING EAST



FACING NORTH



FACING SOUTH



KEY MAP

# Construction Update and Look Ahead Schedule

## *COMPLETED TO DATE (MARCH)*



### ONSITE UPDATE: GYMNASIUM – 2<sup>ND</sup> FLOOR – COMMUNITY HALL



FACING WEST



FACING NORTH



FACING EAST



FACING SOUTH



KEY MAP

# Construction Update and Look Ahead Schedule

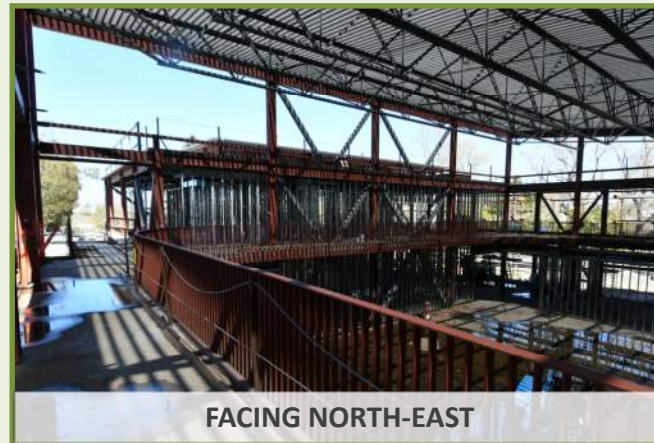
## *COMPLETED TO DATE (MARCH)*



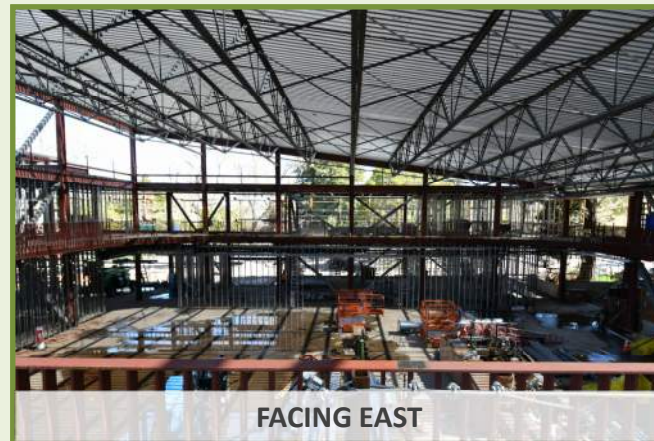
### ONSITE UPDATE: GYMNASIUM – 2<sup>ND</sup> FLOOR – TRACK



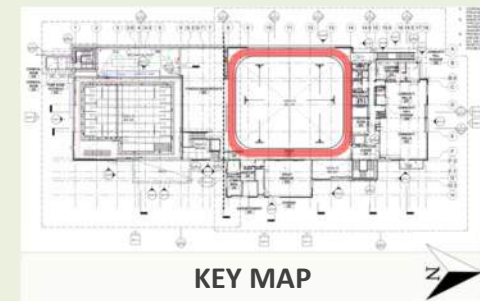
FACING SOUTH-EAST



FACING NORTH-EAST



FACING EAST



KEY MAP

# Construction Update and Look Ahead Schedule

## *COMPLETED TO DATE (MARCH)*



### ONSITE UPDATE: GYMNASIUM – 2<sup>ND</sup> FLOOR – GROUP EXERCISE ROOM



FACING WEST



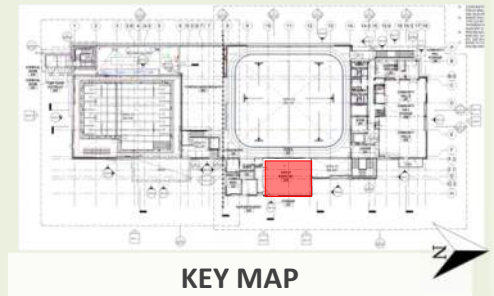
FACING NORTH



FACING EAST



FACING SOUTH



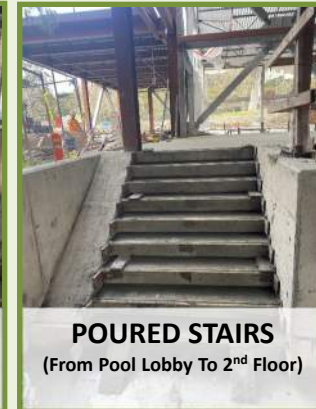
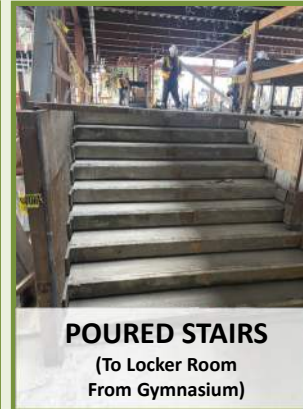
KEY MAP

# Construction Update and Look Ahead Schedule

## *COMPLETED TO DATE (MARCH)*



### ONSITE UPDATE: NATATORIUM



# Construction Update and Look Ahead Schedule

## *COMPLETED TO DATE (MARCH)*



### OFFSITE UPDATE:



PARKING LOT



WATER SERVICE INSTALLATION



TREE REMOVAL ALONG CRYSTAL SPRINGS ROAD



# Construction Update and Look Ahead Schedule

## APRIL PROGRESS



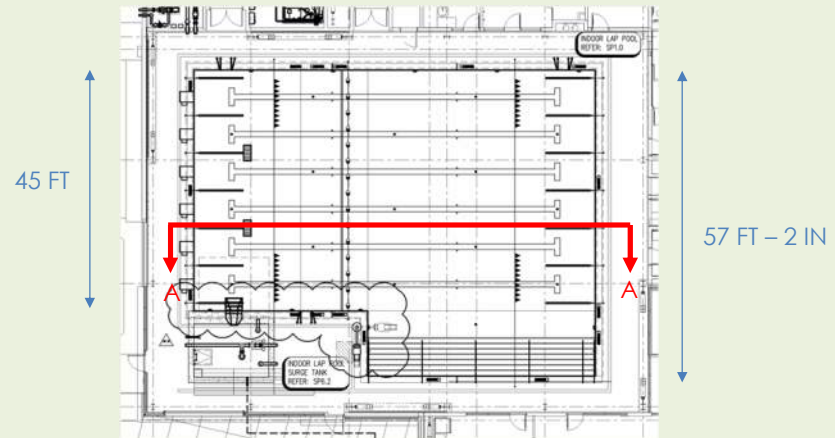
### ONSITE UPDATE: NATATORIUM



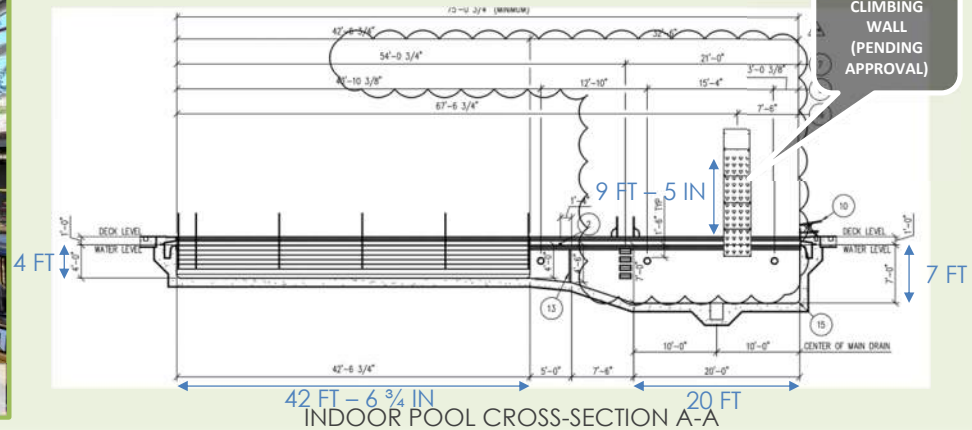
INDOOR POOL DECK GRADE AND FORMS



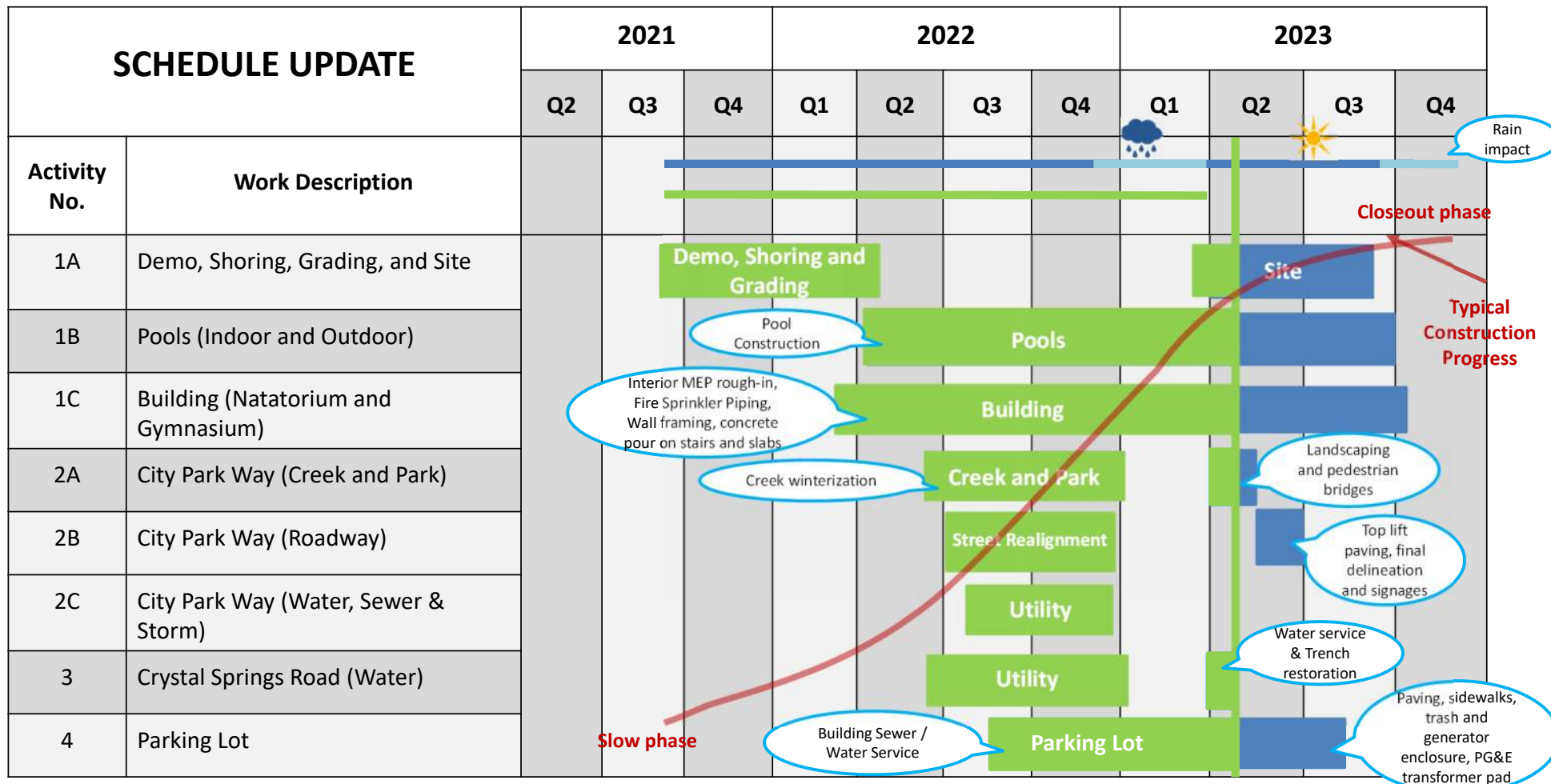
INDOOR POOL EXCAVATION



INDOOR POOL PLAN VIEW



# Construction Update and Look Ahead Schedule



# Construction Update and Look Ahead Schedule

## *PUBLIC OUTREACH*



- Project Website is regularly updated
- Portable Changeable Message Boards will be used for Future Road Closures
- Detour Signs will be placed as needed
- Communicate with Google Navigation system as needed
- Field Contact Numbers are available on all project signs and City Website
- Daily onsite representative is available at the trailer office
- Calls and emails are being answered and addressed
- Crystal Spring Closure Ongoing – To Remove Trees and Street Work

# Construction Update and Look Ahead Schedule

## *WHAT'S HAPPENING NEXT 30 DAYS AND BEYOND?*



### ONSITE WORK

- Indoor pool excavation and shell.
- Continue 1<sup>st</sup> and 2<sup>nd</sup> Floor Mechanical , Electrical, and Plumbing (MEP).
- Continue 1<sup>st</sup> and 2<sup>nd</sup> floor interior wall frames in Natatorium.
- Continue exterior wall frames.
- Complete roof installation.
- Solar Panel Support Installation

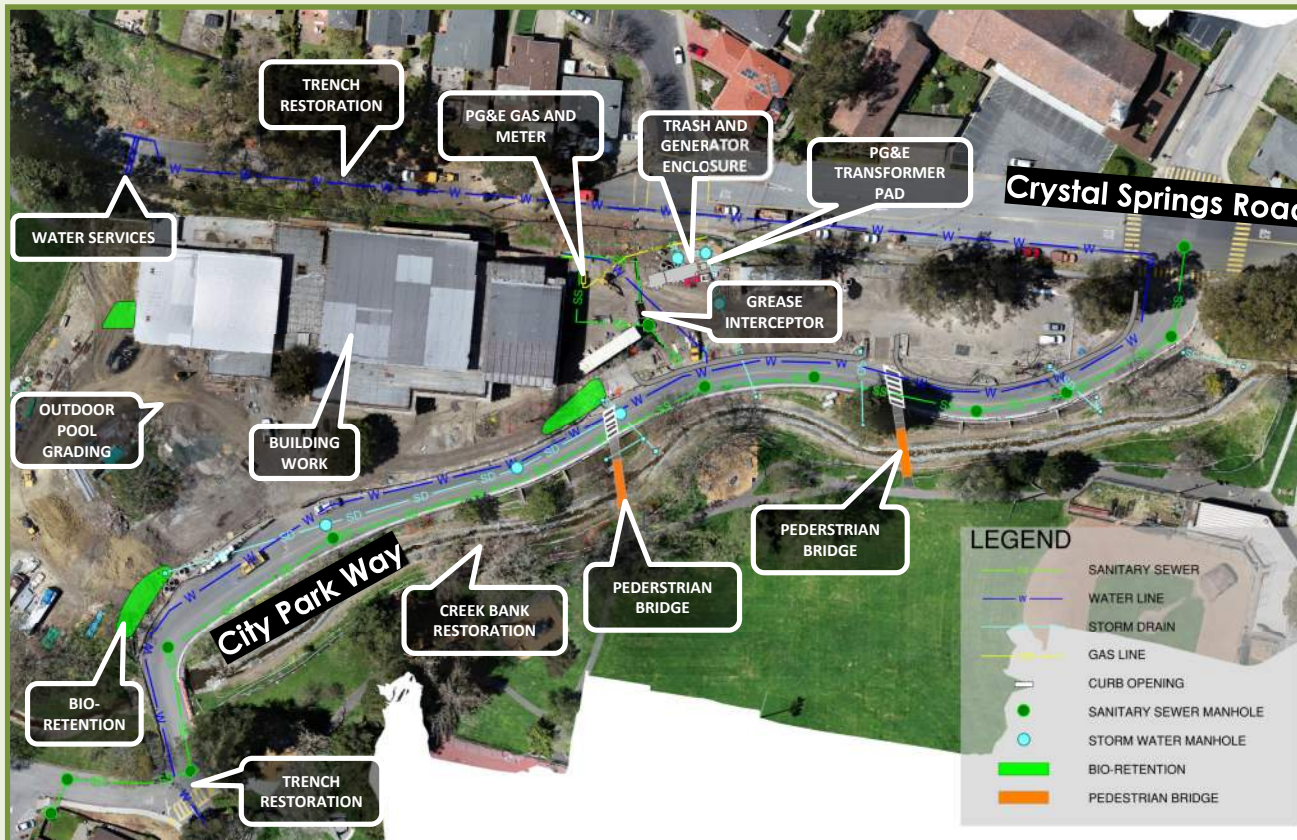
# Construction Update and Look Ahead Schedule

## *WHAT'S HAPPENING NEXT 30 DAYS AND BEYOND?*

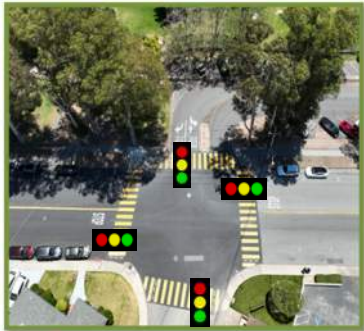


### OFFSITE WORK

- Complete Water Services on Crystal Springs Rd.
- Crystal Springs Rd. Trench Restoration and De Soto Way.
- Install Grease Interceptor
- Trash and Generator Enclosure
- PG&E Transformer Pad
- PG&E Gas Line
- Creek Bank Restoration
- Outdoor Pool Grading
- Irrigation / Landscape Work
- Pedestrian Bridges
- Bio-Retentions

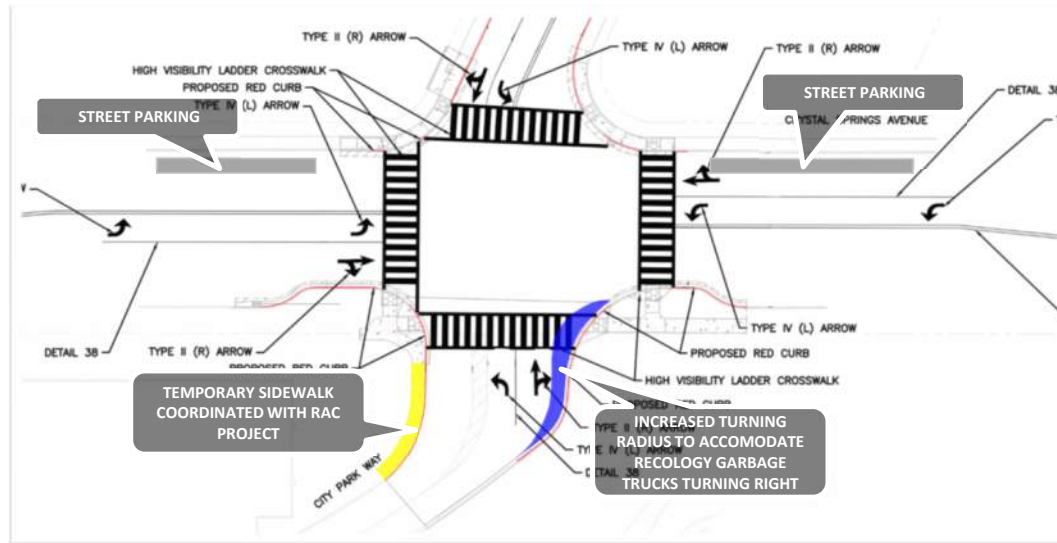


# Crystal Spring / Oak Street / City Parkway Intersection Improvement Project Update



**Traffic Signal System (TSS)**

Traffic Engineer (T.E.) presented intersection traffic control alternatives to (TSPC) Traffic Safety and Parking Committee



**FUNDING SOURCES:**  
Measure A & G Fund (RAC)

**PROJECT BUDGET:**  
\$750,000.00

Designer proceeded with the TSS design preparation

Advertise Project To Receive Bids

Construction NTP



# Beckner Shelter Road Projects



## Sidewalk Access At Crystal Spring Road

\$50,000

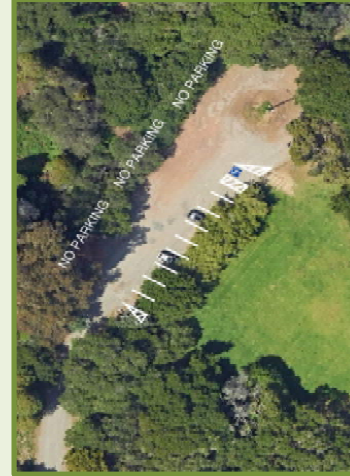


## Beckner Shelter Road Rehabilitation

\$350,000

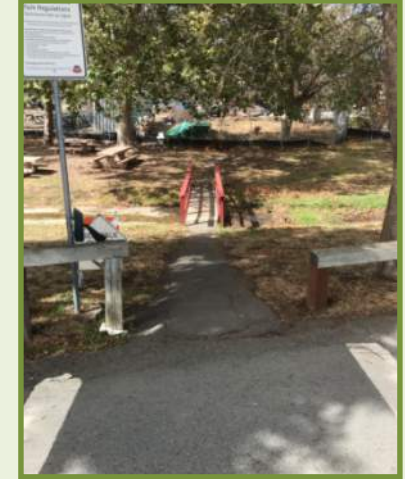


## Parking Re-Striping



## Pool Parking Lot ADA Bridge

\$400,000



### Project Update:

Currently coordinating with the design team.

### Project Budget:

Design Fee of \$150,000

**TOTAL BUDGET: \$950,000**

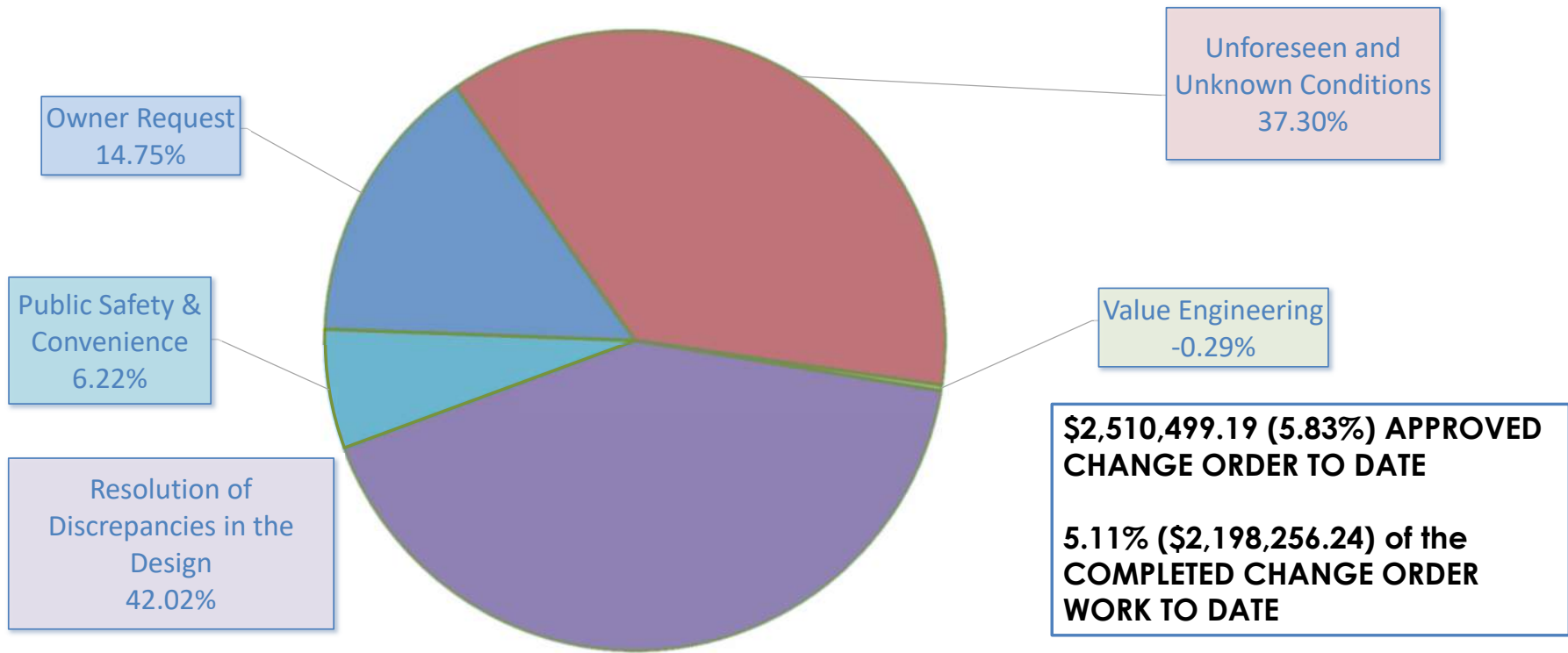
### Project Schedule Target Dates:



# Construction Update and Look Ahead Schedule



## Change Order Report



# Construction Update and Look Ahead Schedule



## Project Budget Update

### Total Project Budget:

- \$62,290,228.00

### Total Expenses To Date:

- \$37,099,475.95 (59.56%)

### Pre-Construction Phase Cost Total:

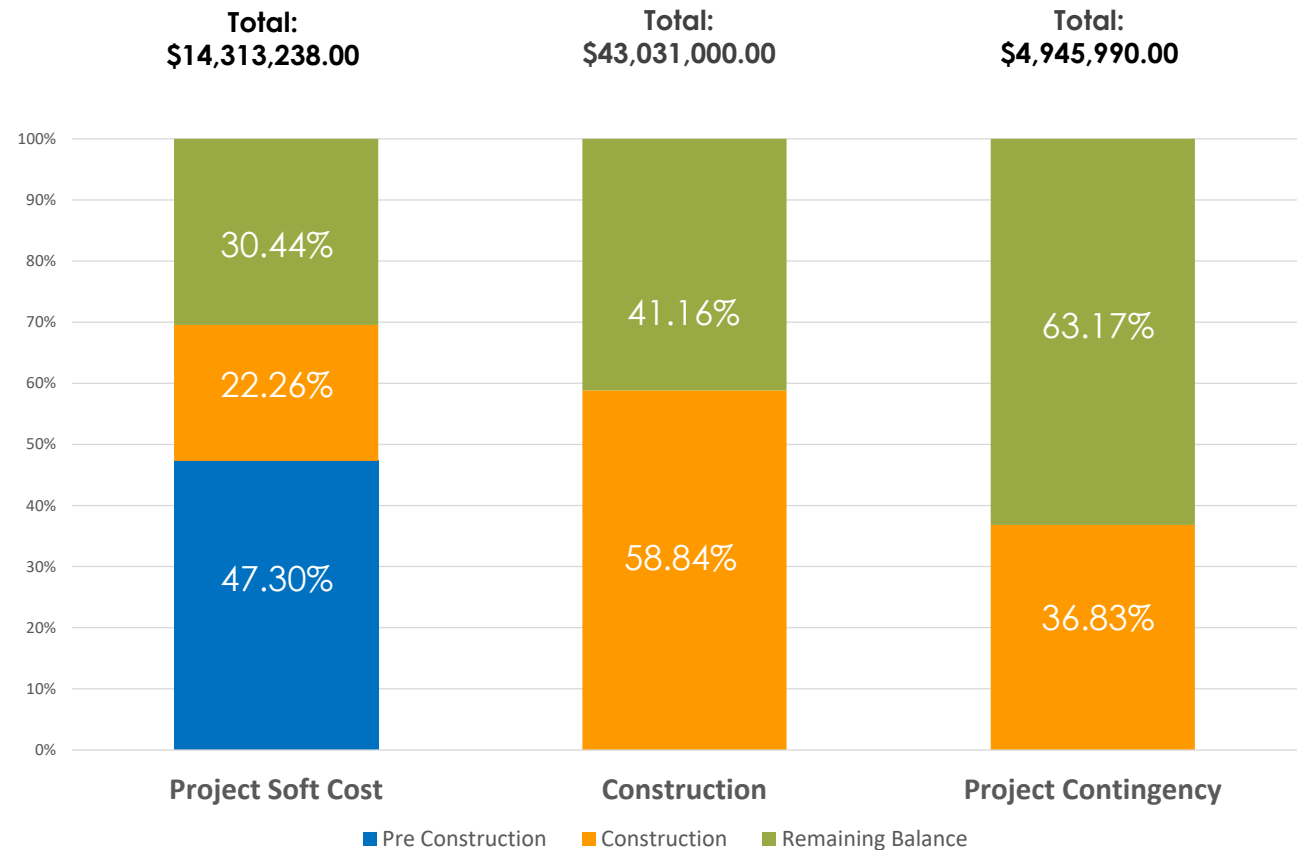
- \$6,770,384.00

### Construction Phase Cost To Date:

- \$30,329,091.95

### SOFT COSTS

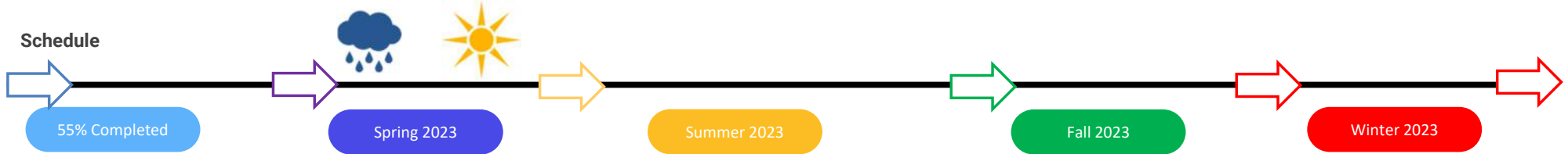
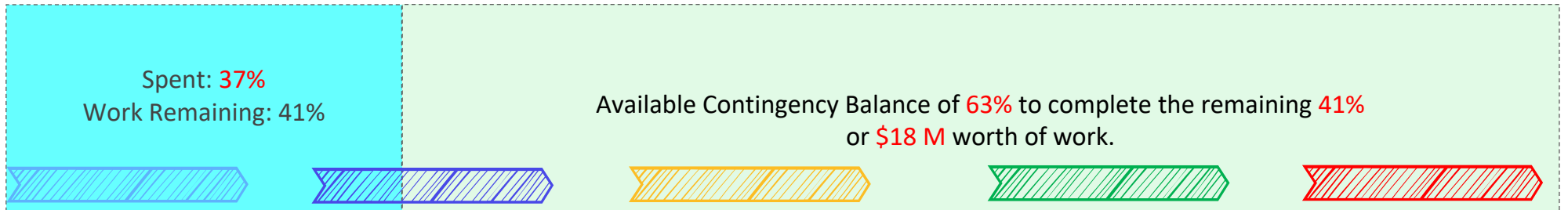
- Design (Group 4)
- Environmental
- Project Manager (Conzor)
- Construction Manager (Griffin Structures)
- Geotechnical, T&I, Waterproofing, Commissioning Services
- Lara Field Parking Lot
- Traffic Signals, Sewer, Water, Sidewalk, CityNet Fiber
- Temporary Space During Construction
- Furniture Fixtures and Equipment
- Electronic systems and special equipment
- Utility company connection and services
- Fees/ Administration/ Business Plan
- Additional Crystal Springs Tree Removal



# OVERVIEW AND OUTLOOK



## Current Contingency Balance



- BUILDING STRUCTURES
- CITY PARKWAY/UTIL
- CREEK IMPROVMENTS
- PARKING LOT
- BUILDING INTERIOR
- EXTERIOR WALL FRAMES
- M.E.P /HVAC
- INDOOR POOL PLUMBING

- CRYSTAL SPRING UTILITY
- CREEK RESTORATION
- CREEK LANDSCAPING
- PEDESTRIAN BRIDGE
- PARKING LOT
- BUILDING INTERIOR FRAMES
- M.E.P /HVAC - ROUGH
- INDOOR POOL EXCAVATION
- PG&E POWER & GAS

- INDOOR POOL SHELL
- BUILDING EXTERIORS
- CITY PARKWAY/UTIL
- CREEK LANDSCAPING
- PEDESTRIAN BRIDGE
- PG&E GAS & ELECTRIC
- PARKING LOT
- BUILDING INTERIOR FRAMES
- M.E.P /HVAC - EQUIPMENT INSTALLATION
- ELECTRICAL PANEL BOARDS
- ARCHITECTURAL WALL FINISHES

- BUILDING ROOF
- BUILDING INTERIORS
- OUTDOOR POOL
- M.E.P/HVAC/ELEVATOR EQUIPMENT TESTING
- SITE LANDSCAPING and FURNISHING
- FURNITURE FIXTURE & EQUIPMENT (FF&E)
- START COMMISSIONING

- COMPLETE COMMISSIONING
- DEDICATION
- IF DELAYED
- CONSTRUCTION COST INCREASE
- CONSULTANT EXTENSION FEES

# THANK YOU

[sanbruno.ca.gov/RecCenterBuild](https://sanbruno.ca.gov/RecCenterBuild)